

## BLUeye - Prestained Protein Ladder

19 FEB 2021

Catalog Number	Size	Range
PM007-0500	500 µl	11 to 245 kDa

### Storage Conditions

Stable for up to 2 weeks at 25°C.

Stable for up to 3 months at 4°C.

Stable for up to 24 months at -20°C.

### Description

The BLUeye Prestained Protein Ladder is a combination of 12 pre-stained proteins with molecular weights from 11 to 245 kDa. The 12 recombinant proteins are covalently coupled with blue chromophore, while 1 green band at 25 kDa and a red band at 75 kDa serve as reference bands. The BLUeye Prestained Protein Ladder keeps track of the size and separation of proteins during SDS-polyacrylamide gel electrophoresis, approximating protein size and validating Western transfer efficiency on PVDF, nylon, or nitrocellulose membranes.

### Kit Content(s)

BLUeye prestained protein ladder	500µl x 1 vial
----------------------------------	----------------

### Storage Buffer

Approximately 0.1~0.4 mg/ml of each protein in buffer (20 mM Trisphosphate pH 7.5 at 25°C), 2% SDS, 0.2 mM Dithiothreitol, 3.6 M Urea, and 15% (v/v) Glycerol.

### Required materials but not provided

- Vertical Electrophoresis system
- Power supplies
- Vortex or equivalent
- Microcentrifuge

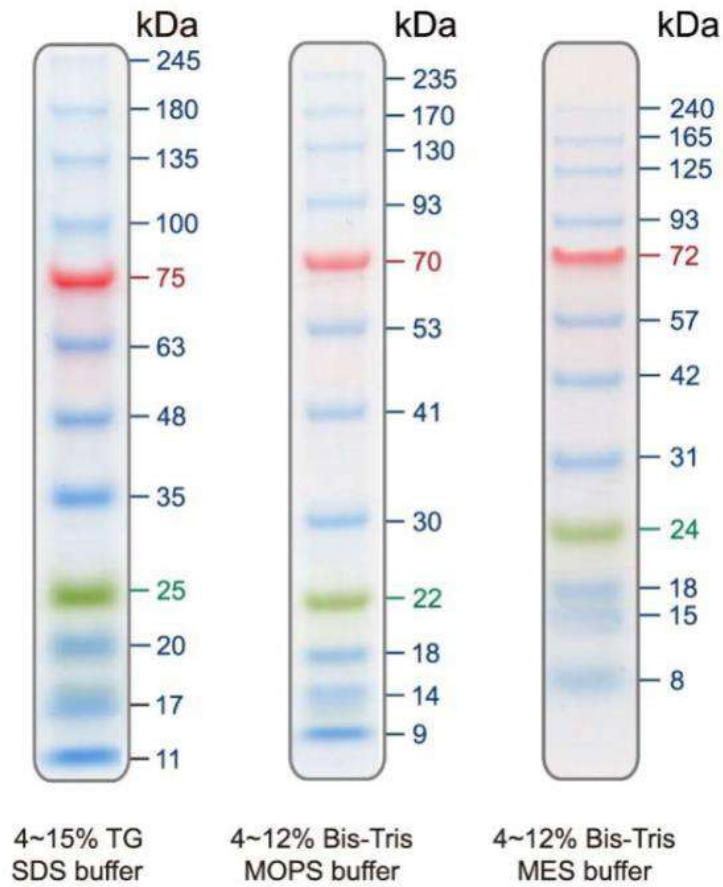
### Reaction Setup

3 µl or 5 µl per loading for clear visualization during electrophoresis on 15-well or 10-well mini-gel, respectively. 2.5 µl per well for general Western transferring.



### Guide for Molecular Weight Estimation (kDa)

Refer to the BLUeye Prestained Protein Ladder patterns in various electrophoresis conditions:



### Important notes

The molecular weight of each protein (kDa) was measured against an unstained protein ladder in every electrophoresis condition. Additional data should be considered for a more accurate adjustment.